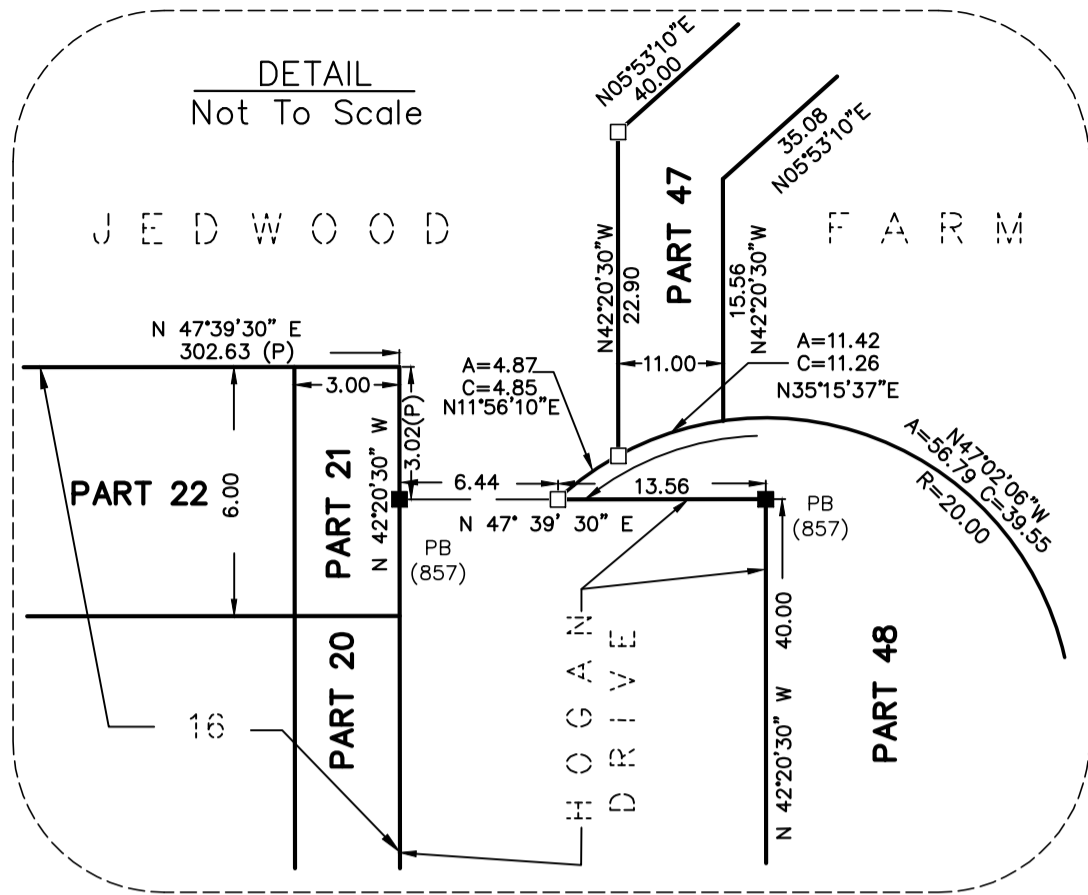


**METRIC**  
DISTANCES AND COORDINATES SHOWN ON THIS PLAN ARE IN METRES AND CAN BE CONVERTED TO FEET BY DIVIDING BY 0.3048



COORDINATES WERE DERIVED FROM REAL TIME NETWORK OBSERVATIONS (SMARTNET) UTM ZONE 18, NAD83 ORIGINAL.  
COORDINATES HAVE BEEN DETERMINED TO AN URBAN ACCURACY IN ACCORDANCE WITH SECTION 14(2) OF O.REG 216/10.  
COORDINATES CANNOT IN THEMSELVES BE USED TO RE-ESTABLISH CORNERS OR BOUNDARIES SHOWN ON THIS PLAN.

POINT ID	NORTHING	EASTING
237	5032188.13	391947.71
238	5032342.72	391815.27

SCHEDULE - COMPILED PLAN		SCHEDULE - SURVEYED PLAN							
PART	LOT/BLOCK	PLAN	PIN	PERPENDICULAR WIDTH	PART	LOT/BLOCK	PLAN	PIN	PERPENDICULAR WIDTH
1	PART OF 2		PART OF 57324-****	3.00	25	PART OF 18		PART OF 57324-****	6.00
2	PART OF 3		PART OF 57324-****	3.00	26			PART OF 57324-****	3.00
3	PART OF 4		PART OF 57324-****	3.00	27			PART OF 57324-****	6.00
4	PART OF 5		PART OF 57324-****	3.00	28	PART OF 19		PART OF 57324-****	3.00
5	PART OF 6		PART OF 57324-****	3.00	29			PART OF 57324-****	6.00
6	PART OF 7		PART OF 57324-****	3.00	30	PART OF 20		PART OF 57324-****	3.00
7	PART OF 8		PART OF 57324-****	3.00	31			PART OF 57324-****	6.00
8	PART OF 9		PART OF 57324-****	3.00	32	PART OF 21		PART OF 57324-****	3.00
9	PART OF 10		PART OF 57324-****	3.00	33			PART OF 57324-****	6.00
10	PART OF 11		PART OF 57324-****	3.00	34	PART OF 22		PART OF 57324-****	3.00
11			PART OF 57324-****	6.00	35			PART OF 57324-****	6.00
12	PART OF 12		PART OF 57324-****	3.00	36	PART OF 23		PART OF 57324-****	3.00
13			PART OF 57324-****	6.00	37	PART OF 24		PART OF 57324-****	6.00
14	PART OF 13		PART OF 57324-****	3.00	38			PART OF 57324-****	3.00
15			PART OF 57324-****	6.00	39	PART OF 25		PART OF 57324-****	6.00
16	PART OF 14		PART OF 57324-****	3.00	40			PART OF 57324-****	3.00
17			PART OF 57324-****	6.00	41	PART OF 26		PART OF 57324-****	6.00
18	PART OF 15		PART OF 57324-****	3.00	42			PART OF 57324-****	3.00
19			PART OF 57324-****	6.00	43	PART OF 27		PART OF 57324-****	6.00
20	PART OF 16		PART OF 57324-****	3.00	44			PART OF 57324-****	3.00
21			PART OF 57324-****	6.00 & 3.00	45	PART OF 28		PART OF 57324-****	6.00
22			PART OF 57324-****	6.00	46			PART OF 57324-****	3.00
23	PART OF 17		PART OF 57324-****	6.00					
24			PART OF 57324-****	3.00					

PARTS 1 TO 48 - SUBJECT TO EASEMENT INST. RE114919

I REQUIRE THIS PLAN TO BE DEPOSITED UNDER THE LAND TITLES ACT.  
DATE \_\_\_\_\_  
DAVID W. WOODLAND, O.L.S.

**PLAN 49R-**  
RECEIVED AND DEPOSITED  
DATE \_\_\_\_\_  
REPRESENTATIVE FOR LAND REGISTRAR FOR THE LAND TITLES DIVISION OF RENFREW (N° 49)

SCHEDULE - SURVEYED PLAN			
PART	LOT/BLOCK	PLAN	PIN
47	PART OF JEDWOOD FARM	39	PART OF 57324-****
48			

COMPILED EASEMENT PLAN OF PART OF LOTS 2 TO 28, (Both Inclusive) REGISTERED PLAN 49M- AND PLAN OF SURVEY OF PART OF JEDWOOD FARM REGISTERED PLAN 39 TOWNSHIP OF McNAB/BRAESIDE COUNTY OF RENFREW  
SCALE 1 : 1250  
FAIRHPART, MOFFATT & WOODLAND LIMITED  
ONTARIO LAND SURVEYORS

**NOTES (WITH RESPECT TO PARTS 47 & 48)**

- BEARINGS ARE ASTROMOMIC AND ARE REFERRED TO THE NORTHEASTERLY LIMIT OF THE ROAD PARTWANCE BETWEEN CONCESSIONS "A" AND "B" SHOWN ON PLAN 49M-\*\*\*\* AS HAVING A BEARING OF N 41°49'30" W.
- BEARINGS CAN BE CONVERTED TO GRID UTM ZONE 18, CENTRAL MERIDIAN 76°30' W LONGITUDE BY APPLYING AN ANGULAR ROTATION OF 01°05'20" IN A CLOCKWISE DIRECTION.
- DISTANCES ARE GROUND AND CAN BE CONVERTED TO GRID BY MULTIPLYING BY THE COMBINED SCALE FACTOR OF 0.999732.

**NOTES (WITH RESPECT TO PARTS 1 TO 46, INCLUSIVE)**

- ALL PARTS LIE WHOLLY WITHIN THE LIMITS OF LOTS OR BLOCKS.
- ALL PARTS HAVE PERPENDICULAR WIDTHS AS NOTED HEREON.
- ALL PREVIOUSLY UNDEFINED LIMITS ARE PARALLEL TO EXISTING LIMITS AND PRODUCTION THEREOF.

**SURVEYOR'S CERTIFICATE (WITH RESPECT TO PARTS 1 TO 46, INCLUSIVE)**  
I HEREBY CERTIFY THAT THIS PLAN IS AN ACCURATE COMPILATION BASED ON DATA DERIVED FROM REGISTERED PLAN 49M-\*\*\*\*.

DATE \_\_\_\_\_ DAVID W. WOODLAND  
ONTARIO LAND SURVEYOR

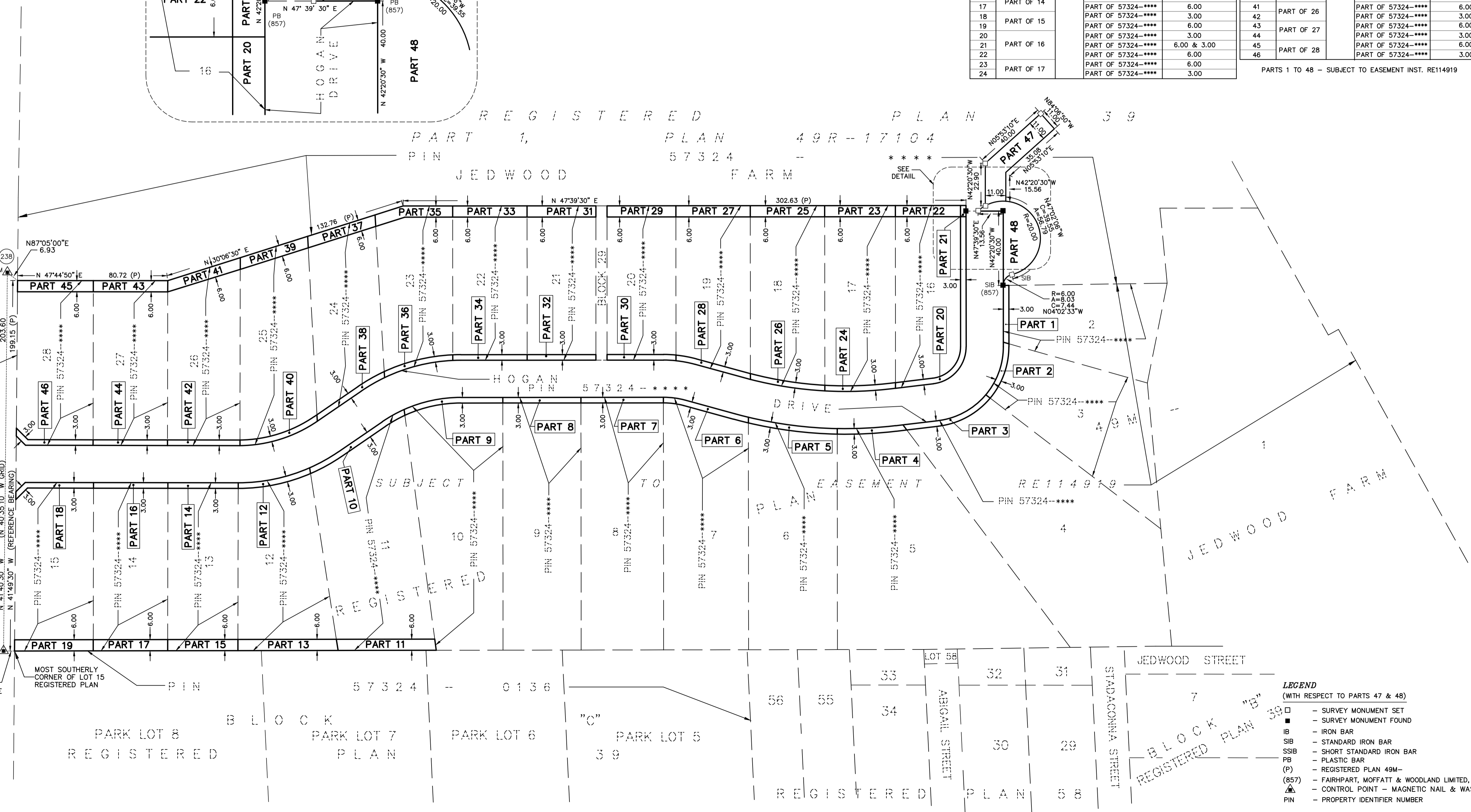
**SURVEYOR'S CERTIFICATE (WITH RESPECT TO PARTS 47 & 48)**  
I CERTIFY THAT:  
1. THIS SURVEY AND PLAN ARE CORRECT AND IN ACCORDANCE WITH THE SURVEYS ACT, THE SURVEYORS ACT AND THE LAND TITLES ACT AND THE REGULATIONS MADE UNDER THEM.  
2. THE SURVEY WAS COMPLETED ON

DATE \_\_\_\_\_ DAVID W. WOODLAND  
ONTARIO LAND SURVEYOR

**Fairhall Moffatt & Woodland LIMITED**  
ONTARIO LAND SURVEYORS  
Surveying and Land Information Services  
100-800 TERRY FOX DRIVE, KANATA, ONTARIO K2L 4B6  
TEL: (613) 591-2590 FAX: (613) 591-1495 www.fmw.on.ca

JOB No. M32001  
REFERENCE No. 1 - 49M-\*\*\*\*  
S:\JOBS\M24300\DWGS RP\_320M.dwg  
JAN. 6, 2015 (jd)

CONCESSION "A" LOT 7  
CONCESSION "B" LOT 8  
CONCESSION "C" LOT 5



**LEGEND (WITH RESPECT TO PARTS 47 & 48)**

- - SURVEY MONUMENT SET
- - SURVEY MONUMENT FOUND
- IB - IRON BAR
- SB - STANDARD IRON BAR
- SSIB - SHORT STANDARD IRON BAR
- PB - PLASTIC BAR
- (P) - REGISTERED PLAN 49M-
- (857) - FAIRHPART, MOFFATT & WOODLAND LIMITED, O.L.S.
- ▲ - CONTROL POINT - MAGNETIC NAIL & WASHER
- PIN - PROPERTY IDENTIFIER NUMBER